

Center Street School PTA

# OSS Fundraiser!

6<sup>th</sup> Grade Outdoor Science Camp



OSS Individual Fundraising Drive

All 5<sup>th</sup> graders can participate in this fundraiser!

Donations due March 31st

Questions? [fifthgrade@csspta.com](mailto:fifthgrade@csspta.com)

Register at: [boonsupply.com](http://boonsupply.com)

# OSS Individual Fundraiser!

**What is OSS you ask?** See FAQs below.

**The Goal:** To raise the estimated tuition cost of \$450 to attend OSS during the student's 6<sup>th</sup> grade year at ESMS.

**Who benefits?:** You and only you. This is not a class or grade level fundraiser, it's an individual fundraiser. The funds you raise only support your 5<sup>th</sup> grade student.

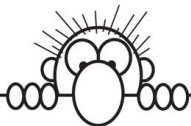
**What do I need to do to get started?:** Visit BoonSupply.com website and register your personal fundraising page (detailed directions on the next page). Send emails to family & friends. Post your OSS Fundraising page on Facebook.

**Other Donations:** You can also collect cash or check donations (ideas for this on another page). Any donations that you collect outside of Boon Supply fundraiser need to be turned into the safe in the front office with "OSS", your student's name and teacher on the envelope. Checks should be made payable to **CSS PTA**.

**Turn in** your cash/check donations by Friday, March 31st to the office.

**Questions?** Ask [fifthgrade@csspta.com](mailto:fifthgrade@csspta.com)

**Pledges due Friday, March 31st**



## Parents Corner!

How to work the system to maximize your donation...

-if your child is going to go to OSS next year, and you just want to pay for it. Write the check now, via this CSS PTA fundraiser, then it can be a tax write-off because CSS PTA is a 501c3 non-profit organization.

# Boon Supply!

## How cool is Boon Supply?

### We chose Boon Supply because:

- Your student makes a **40% profit** on each item he/she sells!
- Lots of different products to choose from: reusable bags, kitchen & organization gadgets, gifts & accessories, travel & on-the-go and food! There is something for everyone!
- Boon Supply tracks the orders.
- Boon Supply tracks which student the funds belong to.
- Boon Supply ships the orders (so you don't have to worry about distributing them after your family and friends buy them).
- You just promote and watch the orders come in, so your student can go to OSS next year.

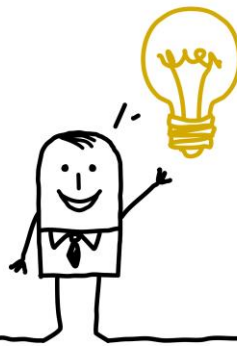


### How to get started at Boon Supply

- Check out the Boon Supply website ([boonsupply.com](http://boonsupply.com))
- Click on Find a Fundraiser
- Type in "Center Street School"
- Click on "Sellers, [register here](#) to track your orders" to set up your child's fundraising page.
- Then type in your Fundraiser ID: 61542

## Ideas of ways to raise funds other than asking people for money:

- set up a lemonade or cookie or other treat stand
- offer dog walking/pet sitting services
- recycle cans and bottles (ask neighbors for their extra recyclables)
- have a garage sale (everything the student cleans out his/her room that sell goes to your OSS fund)
- ask parents to match funds raised or earned
- offer to do chores for neighbors or other people you know (mow, pull weeds, put away their trash can after the trash truck comes, etc.)
- make and sell special cards or some other craft project.



## Ways students can encourage people to donate:

- ask for a donation with a smile, saying “please” and “thank you”.
- promise to keep a journal while at OSS and then type it up and send it to them.
- send out emails, social media requests and put the website out there for Boon Supply.
- promise to send a special thank you note handwritten or with pictures from you for the donation.
- tell them that CSS PTA is a 501c3 non-profit charity, therefore cash/check donations are tax-deductible (merchandise is not).



### Key dates:

Fundraising starts: Today!

Register at [boonsupply.com](http://boonsupply.com): Today!

Cash/Check donations due: March 31st

Final day for Boon Supply orders is March 31st



## **FAQ's about the Fundraiser:**

**Do I have to participate?** No.

**Where do the funds go that I raise?** Every sale your student makes will generate a 40% profit which will off-set your student's OSS registration fees.

**Who benefits?** CSS PTA sends the funds you raise over to ESMS with a complete accounting of each individual student amount. Only your student's fees are off-set by this fundraiser to attend OSS, which means less money for you to pay next Spring. CSS PTA does not keep any of the funds raised.

**For example:** If Danny raises \$200 and Kyra raises \$400, then Danny's parents will need to pay an additional \$250, whereas Kyra's parents will need to pay \$50. So, the more you sell or collect/fundraise now, the less you pay for later.

**Questions? [fifthgrade@csspta.com](mailto:fifthgrade@csspta.com)**

**Register at: [boonsupply.com](http://boonsupply.com)**



## **FAQ's about Outdoor Science School:**

The **Outdoor Science School** is operated by the Los Angeles County Office of Education. They provide environmental science education for 6th graders in a residential camp setting. El Segundo Middle School students go to the hills of Malibu for a 5-day program where the students explore an outdoor classroom. The science content is taught by experienced naturalists and students stay in cabins overnight.

OSS focuses on teaching state science standards through hands-on learning while exposing students to new social settings, exploring different environments, and providing them with new experiences. Students leave the program with a new sense of personal responsibility, independence and understanding of the natural world around them.

**When is OSS?** Spring of the student's 6<sup>th</sup> grade year at ESMS

**How much does OSS Cost?** It is estimated that it will cost about \$450. There is also a souvenir sweatshirt (designed by one of the students) that is usually about \$40-\$50.

**Who pays for OSS?** The attending student/student's family

**Who gets to go to OSS?** All 6<sup>th</sup> grade students who maintain their academic grades and citizenship grades at ESMS (exact guidelines will be provided at ESMS).

**What happens if I raise too much money?** Any money that you raise over the cost of your student(s) attending OSS will be placed in a general scholarship fund to help those who need financial assistance to attend OSS.

**What happens if my student cannot/does not go to OSS?** If you contributed money to your student's OSS fund and your student cannot/does not attend, then the funds that were allocated to your student will be placed in a general scholarship fund to help those who need financial assistance to attend OSS. There are no refunds. If you switch schools, you will not receive a refund from the OSS funds earned.

**What happens if I don't raise enough money?** If you only raise part of the funds for your student to attend, then you will be asked to pay the remaining amount. You may also inquire about a scholarship for your student. The ESMS OSS coordinator will consider all requests for financial help.

